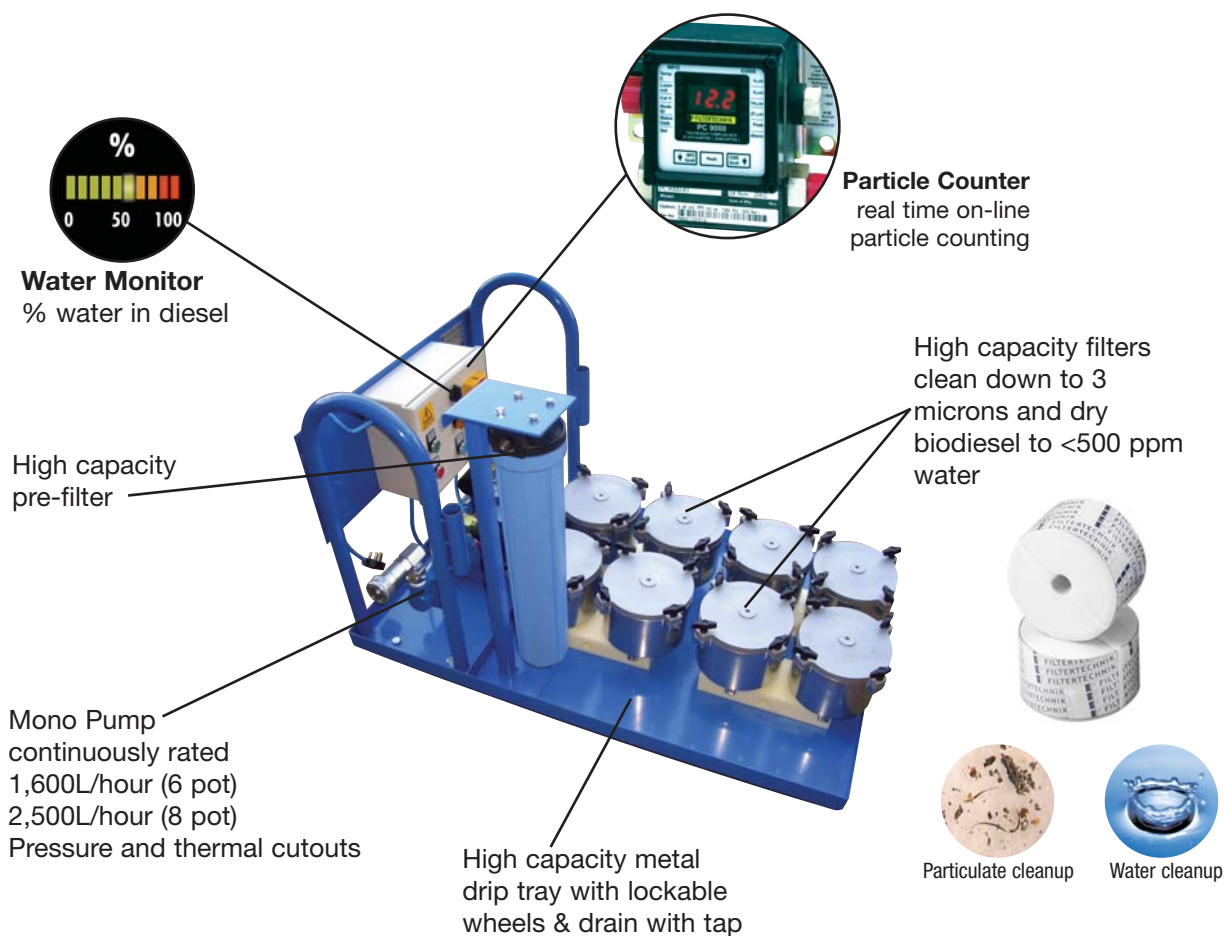




## New increased capacity 6 & 8 pot BD6000 Polisher Units

In response to demand we have developed increased capacity BD6000 portable polisher filtration machines fitted with optional on-line particle & water monitors. With a choice of 6 or 8 pots, these units have the extra capacity to meet your increased production volumes.



For special pricing on these new high capacity filter units

Call: 0800 068 4134 / +44 (0)1159 003550

### Filtertechnik Biodiesel Polishing Rigs

Model	Flow rate	Dirt holding capacity	Water removal	Particulate counter	Water Monitor	Voltage
BD6000-2	500 L/hr	4kg	yes (1.5litres)	optional	optional	220 / 110VAC
BD6000-4	1200 L/hr	8kg	yes (3.0litres)	optional	optional	220 / 110VAC
BD6000-6 (new)	1800 L/hr	12kg	yes (4.5litres)	optional	optional	220 / 110VAC
BD6000-8 (new)	2500 L/hr	16kg	yes (6litres)	optional	optional	220 / 110VAC
IBD6000-6-WM (new)	1800 L/hr	12kg	yes (4.5litres)	yes	yes	220 / 110VAC
IBD6000-8-WM (new)	2500 L/hr	16kg	yes (6litres)	yes	yes	220 / 110VAC

Above systems use SDFC(W) elements for biodiesel cleanup (see over). Filter down to 3micron.



## Proof that our Wash and Polishing systems work

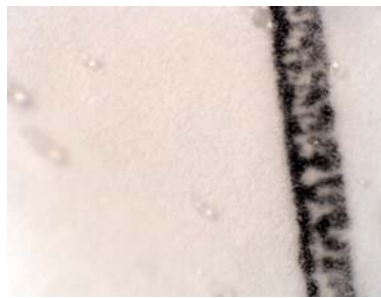
### Patch Test Analysis

This is an excellent test to demonstrate how effective our Wash and Polishing systems are at removing all traces of Magnesium Silicate and other contaminants.

Three samples were pulled through a 1.2 micron patch under vacuum and viewed under a microscope with 400 x magnification. The dark black lines visible are the grid-lines on the slide which allow visual comparison to actual particle size.



Sample 1: During the agitation stage from the wash tank.



Sample 2: Taken downstream of our Wash System. A significant reduction in Magnesium Silicate now showing minimal traces.



Sample 3: After final polishing using the BD6000. Slides now showing excellent clarity.

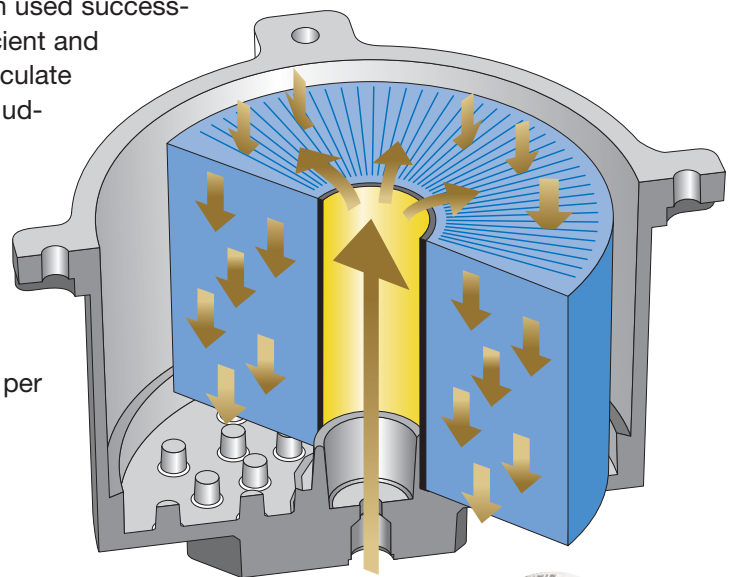
## BD6000 Polishing Unit filtration

The Filtertechnik by-pass filter has been used successfully for over 20 years. It is a highly efficient and cost-effective method of removing particulate and water from oils and diesel fuels including biodiesel and base vegetable oils.

### Filtration efficiency

- Super Duty Filter Cartridges achieve ISO14/12/9 (NAS Class 5)
- Particulate removal: Up to 2000 g of dirt per cartridge
- Water removal: up to 800 ml of water per cartridge

***Our filter elements will give you guaranteed results of oils, diesel or biodiesel that are clean and dry!***



### W Media Filter elements info

Model	Flow	water/ oil removal	Dirt holding capacity
SDFC(W)	10L/min	0.75 Litre Water	2Kg
SDFC(P)	10L/min	1Litre oil	2kg

