

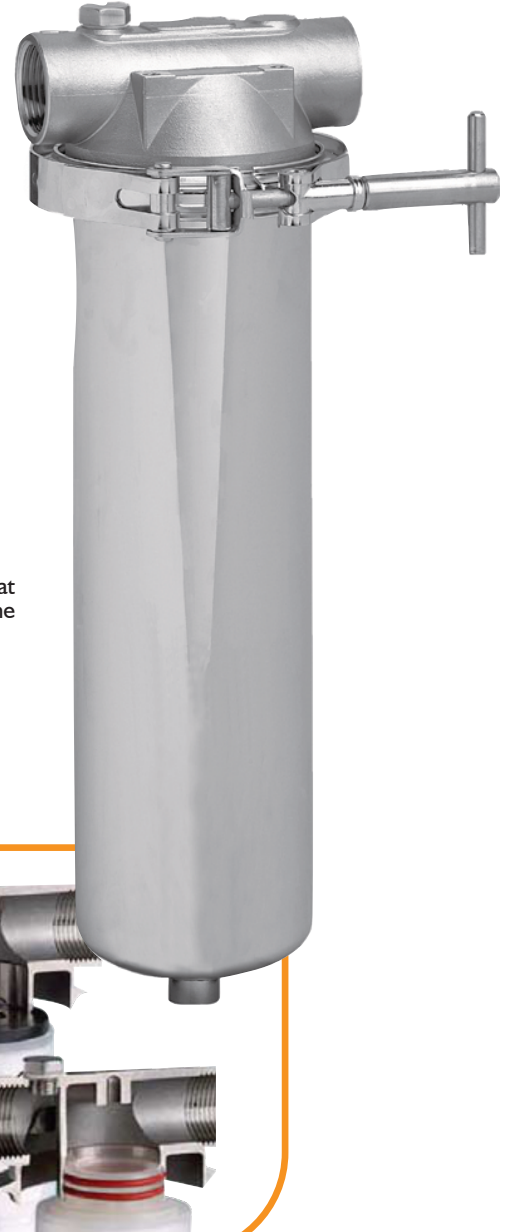
52 SERIES

SINGLE STACK FILTER HOUSING

The **52 SERIES** single cartridge housing is a further development of the successful 51 SERIES housing. Still with the ability to accept both standard Double Open End and Single Open End cartridges, this single stack housing has an enhanced Cast clamp and solid ring closure, that has proved very successful in a wide variety of applications within both the liquids and low pressure gas processing industries. The 52 SERIES will accept the full range of Filtertechnik and industry standard cartridges ranging from 0.1 to 500µm with nominal lengths of 5, 10, 20 and 30".

Product features

- Quick release Vee Clamp Closure for easy opening
- Lightweight, high specification investment cast head
- Easy to use tie rod assembly design ensures cartridge centralisation (for a reliable knife edge seal) that enables the use of either 9.75" or 10" cartridge length configurations (or multiples) in the same housing.
- Dual purpose head accepts SOE code 3 and DOE cartridges
- SOE code 7 and code B adaptors available.
- Available in 316L stainless steel or Hastelloy C22 for maximum compatibility.
- Wide range of connection size and types, cartridge lengths and materials of construction.
- PED Compliant to Cat I.
- Full traceability on all parts, material certification packs available.
- Rated at 20 bar liquid, 16 bar Gas



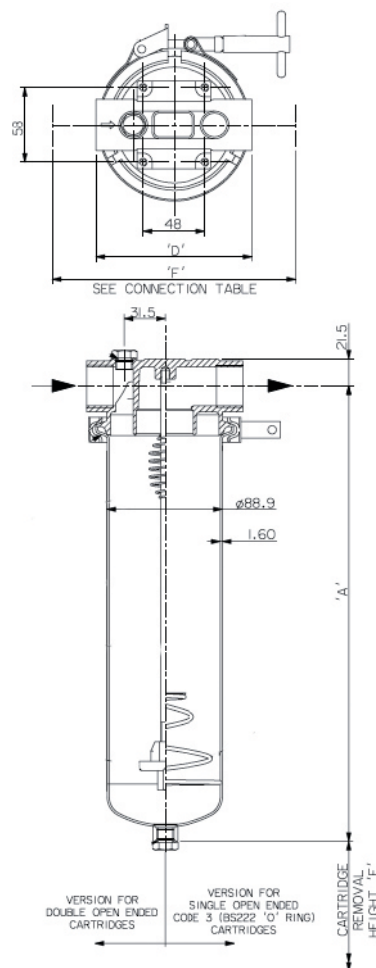
52 series features and benefits

- Investment Cast head (avoids the porosity & inclusion problems associated with lower quality sand castings).
- Integral vent and drain sockets to aid efficient filter changeout complete with PTFE washer.
- Unique interchangeable configuration enables choice of SOE or DOE cartridge styles in the same housing.
- Every housing is etched with a batch number for full traceability
- Full housing customisation service available
- Available in both 316L Stainless Steel and C22 Hastelloy

TECHNICAL DATA

Maximum Operating Conditions	
Maximum Pressure	Liquid: 20 Bar g Gas: 16 Bar g
Maximum Temperature	110°C
Materials of Construction	
Body and Closure	316L St. Steel
	Hastelloy C22
Clamp	304 St. Steel
Seal	Ethylene Propylene
Finish	
Vessel	Externally polished sump, bead blast head
Connections	
Inlet/Outlet	1" BSPF
Vent	1/4" BSPF with plug
Drain	1/4" BSPF with plug

Model	Dimensions					Volume (Litres)	Dry Weight
	A	B	C	D	E		
5"	214	-	-	120	173	1.5	2.0
10"	341	-	-	120	300	2.2	2.6
20"	595	-	-	120	554	3.8	3.6
30"	849	-	-	120	808	5.2	4.6



PED Status: Compliant with 97/23/EC

- Fluid Groups: Gas Group 1 (10"), Gas Group 2 (20 and 30")
Liquids Group 1 + 2
- Marking: CE
- Exceptions: Group 1 Liquids - Oxidising or Explosive
- ATEX: Compliant 94/9/EC, level CE Ex II 2 GD c X

Ordering Guide

