

## 61 Series

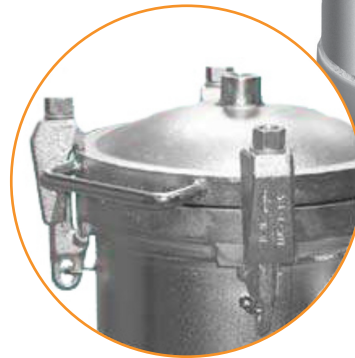
### MULTI STACK FILTER HOUSING

The **61 SERIES** multi cartridge housing is available with 3, 5, 7, 10, 15, 18 19 and 22 element stacks up to 40" long. The top opening style is equipped with a Cast Vee clamp as standard for pressures up to 10 bar g.

These housings are widely used where low capital cost is of prime importance. Being floor mounted and therefore free standing, these housings will suit most pre-filtration applications. Bolted closures are an option available for all models.

The **61 SERIES** will accept either standard Double Open End or Single Open End cartridges. This includes the full range of Filtertechnik and industry standard cartridges ranging from 0.1 to 500µm with nominal lengths of 10, 20, 30 and 40".

Accessories available include pressure gauge and vent valve kits, drain valves and bolt down plates.



#### Product Features

- High security bolted closure suitable for hazardous applications
- Dual purpose head accepts SOE code 3 and DOE cartridges
- SOE code 7 and code B adaptors available
- Offered with a wide range of connection sizes and types
- Available for a range of cartridge lengths
- PED and ATEX Compliant
- Full traceability on all parts, material certification packs available
- Rated at 10 bar and full vacuum in liquids
- Rated at 9 bar and full vacuum in gases

#### Features and Benefits

- Integral vent, clean and dirty drain sockets to aid efficient filter changeout
- Universal cup enables choice of plug in (Code 3, Code 8 and Code A) or DOE cartridge styles in the same housing
- Every housing is etched with a unique serial number for full traceability
- Available in 316L Stainless Steel
- Full housing customisation service available
- Internally and externally electropolished as standard

## TECHNICAL DATA

### Maximum Operating Conditions

		6103	6105	6107	6110	6115
Liquid:	Vee Clamp:	10 Bar g	10 Bar g	10 Bar g	7 Bar g	
Bolted Closure:		FV / 10 Bar g	FV / 10 Bar g	FV / 10 Bar g	FV / 10 Bar g	FV / 6 Bar g
Gas:	Vee Clamp:	7.5 Bar g	4.5 Bar g	2 Bar g	1.5 Bar g	
Bolted Closure:		FV / 7.5 Bar g	FV / 4.5 Bar g	FV / 2 Bar g	FV / 1.5 Bar g	FV / 1 Bar g

### Materials of Construction

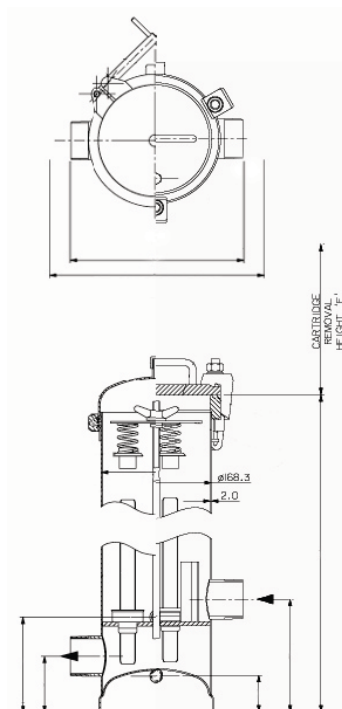
Body and Closure::	316L St.Steel
Closure:	Vee Clamp - 304 St.Steel
	Screw Clamp - Zinc plated carbon steel
	(Optional Stainless Steel)
Vessel Finish:	Electropolished

### Connections

	6103	6105	6110
Inlet/Outlet:	2" BSPM	3" BSPM	4" BSPM
Vent:	¼" BSPM	¼" BSPM	½" BSPM
Drain:	½" BSPM	½" BSPM	1" BSPM

### PED Status:

Fluid Groups	Compliant with 2014/68/EU
	Liquids Group 2
	Gas Group 2
Marking	Sound Engineering Practice
ATEX	Compliant 2014/34/EU, level CE Ex II 2 GD c X



### Ordering guide

