

62 Series

19-40 ROUND MULTI CARTRIDGE HOUSINGS

The 62 Series Multi cartridge housing is designed to accommodate 19, 22, 24, 30 or 40 stacks of filter cartridges up to 40" long. The top opening style is equipped with Rathmann style bolted closures as standard for pressures ranging from FV / 10 bar g. Leg mounted and equipped with the more conventional dished end, these housings suit processes where there is a need to allow complete drainage of the clean chamber. This design assists in maintaining the general cleanliness of the process system. With the ability to accept both standard Double Open End and Single Open End cartridges, this leg mounted, free standing housing will suit most applications.

The 62 Series will accept the full range of Amazon and industry standard cartridges ranging from 0.1 to 500 μ m with nominal lengths of 30 and 40". For information on housings suitable for 3-18 cartridges refer to datasheet '62 Series-3-18 Round Multi Cartridge Housings'.



Product Features

- Dished bottom end allows complete drainage of clean chamber, leading to improved system cleanliness
- Rathmann style bolted closures for reliable leak free operation
- Cast compression nut with integral PTFE washer for easy, hand tight cartridge sealing
- Wide range of connection sizes and types, cartridge lengths and materials of construction
- PED and ATEX Compliant
- DWI Approved product

Features and Benefits

- Integral vent, clean and dirty drains to aid efficient filter change-out
- Each housing hydrostatically pressure tested
- Each housing is etched with a unique serial number for full traceability
- Full housing customisation service available
- Universal cup enables choice of plug in (Code 3 and Code 8) or DOE cartridge styles in the same housing
- DWI Approved product

TECHNICAL DATA

Maximum Operating Conditions

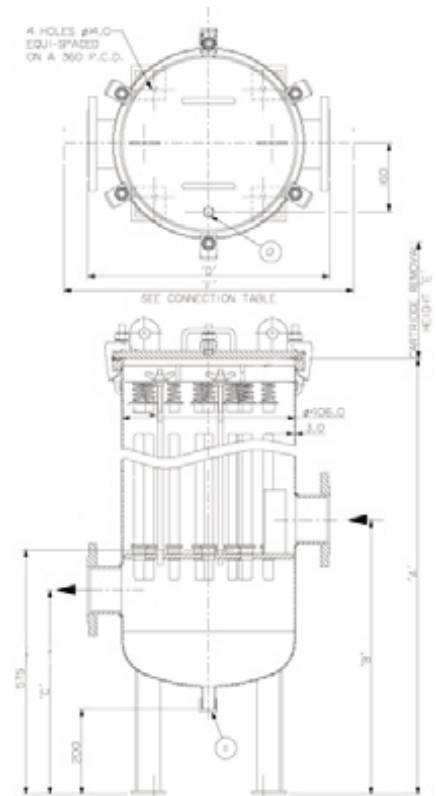
	6219/22	6224/30/40
Pressure Range	FV / 6 Bar g	FV / 10 Bar g
Temperature Range:	-10 °C / 150°C	-10 °C / 150°C

Materials of Construction

Body and Closure::	316L St.Steel
Screw clamps	Zinc plated carbon Steel (Optional Stainless Steel)
Vessel Finish:	6219/22 - Electropolished 6224 & 6230 & 6240 - Pickle, Passivate and External Bead Blast

Connections

	6219/22	6224 - 30 - 40
Inlet/Outlet:	4" Flange	6" Flange
Vent:	½" BSPM	½" BSPM
Drain	1" BSPM	1" BSPM



PED Status: Compliant with 2014/68/EU

Fluid Groups	Liquids Group I & 2
Marking	CE Marked
Exceptions:	Group I liquids - Explosive
ATEX	Compliant 2014/68/EU, level CE Ex II 2 GD c X

Ordering guide

