

FTB-B-14-XX MEDIUM PRESSURE FILTER

Features and Benefits

- Durable, compact design
- Quick and easy cartridge change outs.
- 14" element length
- Lightweight at 8 pounds
- Various Dirt Alarm® options
- Same day shipment model available

SAME DAY SHIPPING MODEL AVAILABLE!

Also available in a 9" length
FTB-B-XX

Model No. Of filter in photograph is FTB-B-14-XX.

**70 gpm
190 L/min
1000 psi
69 bar**

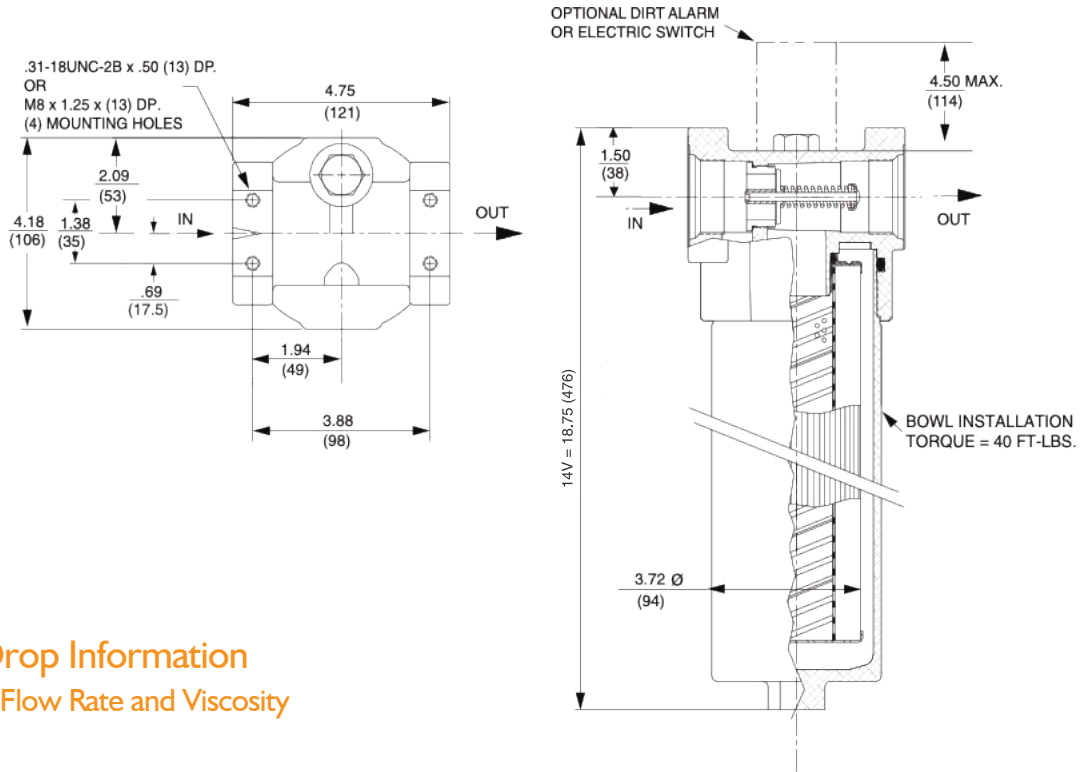


Filter Housing Specifications	
Flow Rating	Up to 50 gpm (190 L/min) for 150 SUS (32 cSt) fluids for B16 porting 1" BSP
Max. Operating Pressure	1000 psi (69 bar)
Min. Yield Pressure	4200 psi (290 bar), per NFPA T2.6.1
Rated Fatigue Pressure	415 psi (29 bar) per NFPA T2.6.1-R1-2005
Temp. Range	-20°F to 225°F (-29°C to 107°C)
Bypass Setting	Cracking: 40 psi (2.8 bar) for all porting Full Flow: 75 psi (5.2 bar) for B16
Porting Head Element Case	Aluminium
Weight of FTB-14-XX	8 lbs. (3.6kg)
Element Change Clearance	2,75" (70mm)

Fluid Compatibility	
Type Fluid	Appropriate Media
Petroleum Based Fluids	All E media (cellulose) and Z media® (synthetic)
High Water Content	All Z-Media® (synthetic)
Invert Emulsions	10 and 25 μ Z-Media® (synthetic)
Water Glycols	3, 5, 10, 25 μ Z-Media (synthetic)
Phosphate Esters	All Z media® (synthetic) with H (EPRO Seal designation)
Skydrol®	3, 5, 10 and 25 μ Z-Media® (synthetic) with H.5 seal designation (EPR seals and stainless steel wire mesh in element, and light oil coating on housing exterior)

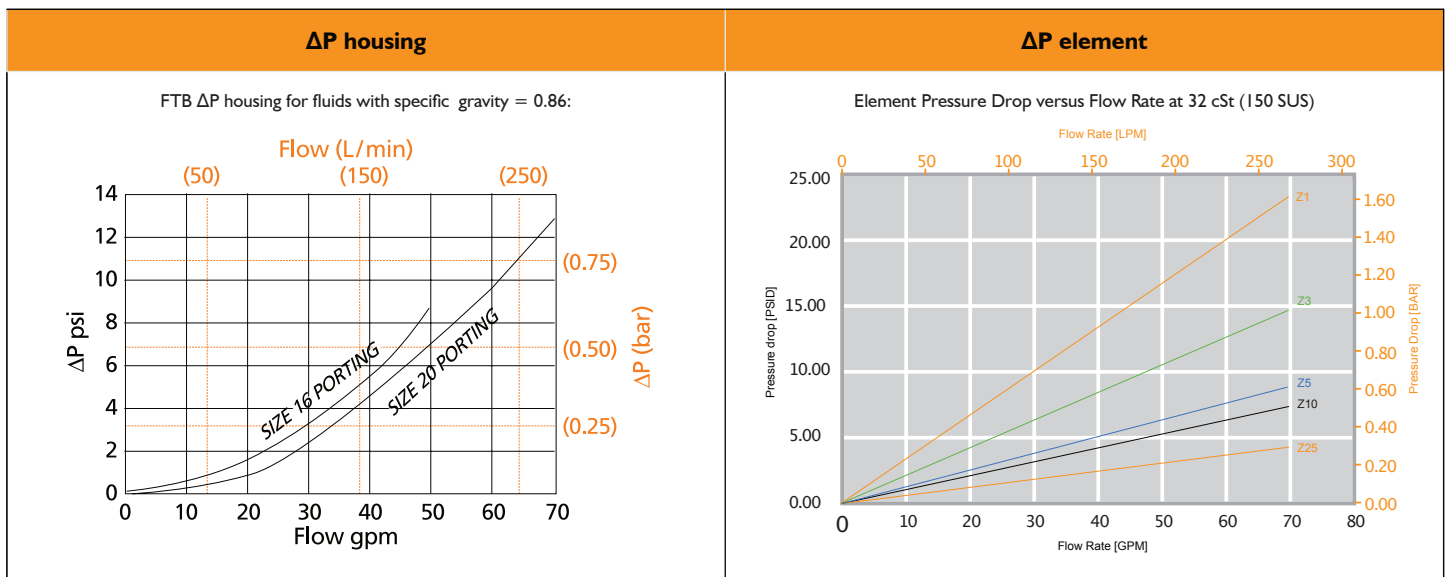
Element Collapse Rating: 150 psid (10 bar)
Flow Direction: Outside In
Element Nominal Dimensions: 14V: 3.0" (75mm) O.D. X 14.5" (370mm) long

Element Performance Information and Dirt Holding Capacity							
Element	Filtration Ratio Per ISO 4572 / NFPA T3.10.8.8			Filtration Ratio wrt ISO 16889		Dirt Holding Capacity gm	
	Using automated particle counter (APC) calibrated per ISO 4402						
	β _x ≥ 75	β _x ≥ 100	β _x ≥ 200	β _{x(c)} ≥ 200	β _x (c) ≥ 1000		
14VZ1	<1.0	<1.0	<1.0	<4.0	4.2	55	
14VZ3	<1.0	<1.0	<2.0	<4.0	4.8	57	
14VZ5	2.5	3.0	4.0	4.8	6.3	62	
14VZ10	7.4	8.2	10.0	8.0	10.0	52	
14VZ25	18.0	20.0	22.5	19.0	24.0	48	



Pressure Drop Information

Based on the Flow Rate and Viscosity



Order Guide

FTB-B-

 Length 14"	 Size & Media)01 - V size 1 μ Excellment® Z Media® (synthetic) 03 - V size 3 μ Excellment® Z Media® (synthetic) 05 - V size 5 μ Excellment® Z Media® (synthetic) 10 - V size 10 μ Excellment® Z Media® (synthetic) 25 - V size 25 μ Excellment® Z Media® (synthetic) Water Service Element Options VM160 - V size 60 μ M media (reusable metal) VM150 - V size 150 μ M media (reusable metal) VM260 - V size 260 μ M media (reusable metal)	 Porting B16 = ISO 228 G - 1"	 Dirt Alarm Omit - None D5 - Visual pop-up MS10 - Electrical indicator
--------------------------	-------------------------------------------------------------------------------------------------------------------------------------------------------------------------------------------------------------------------------------------------------------------------------------------------------------------------------------------------------------------------------------------------------------------------------------------------------------------------------------------------------------	--------------------------------------------	-------------------------------------------------------------------------------------------