

ON-SITE FUEL ANALYSIS

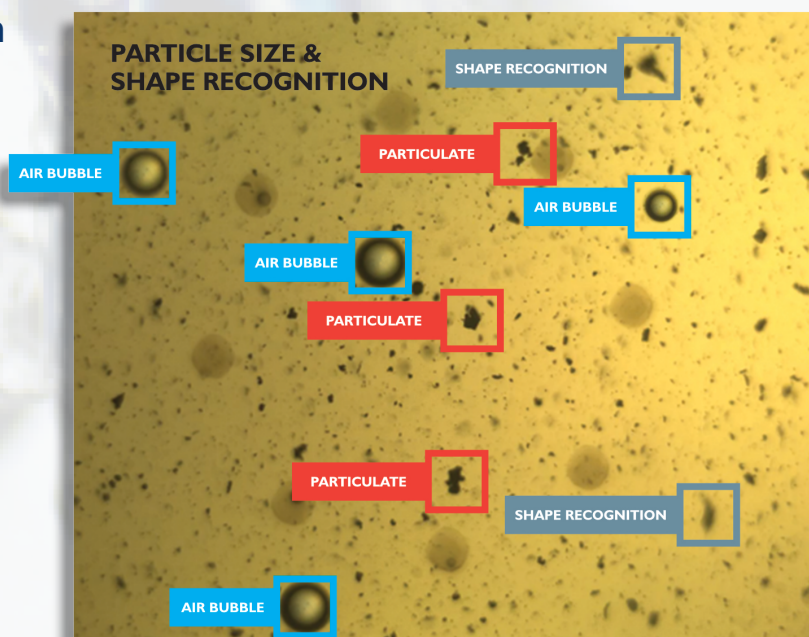
Our all new **Particle Pal Plus** utilises breakthrough digital imaging technology which provides a greater insight into the size and type of particulate in any fuel system. Air bubble elimination and shape recognition gives root cause particle analysis. Water content and density sensors complete the package.



FS9V4-PPM-DEN

Harnessing the power of proven digital imaging technology with density and water sensing technology

We've embedded the latest in particle counting technology into our new Particle Pal Plus series. Giving ISO 4406 counts as well as 4, 6, 14, 21, 38 & 70 micron sizing and bubble elimination. Digital imaging, combined with advanced algorithms, sorts particles into fatigue wear, cutting wear and sliding wear categories to give root cause analysis. This powerful technology, when coupled with additional sensors for measuring water content and density gives unprecedented, on-the-spot insight into the condition of your fuel.



The image above is 4mm x 3mm and shows particulate that the human eye can't see. Images of the fuel are not displayed on the screen.



Digital Imaging Particulate Counter

Capable of broad size determination from 4, 6, 14, 21, 38 & 70 micron counts. Air bubble and water droplet elimination. Shape determination to identify fatigue, sliding or cutting wear as well as fibre identification.



Battery Life

Internal rechargeable lithium batteries providing up to ten hours of use.



Water Sensor

Water in fuel is a contaminant that can contribute to microbial growth and encourage further contamination, from solids to rust. The inbuilt water sensor shows the water content of fuel in ppm.



Water content.

Displayed as parts per million (PPM). Helps inform whether water removal is actually required.



Density.

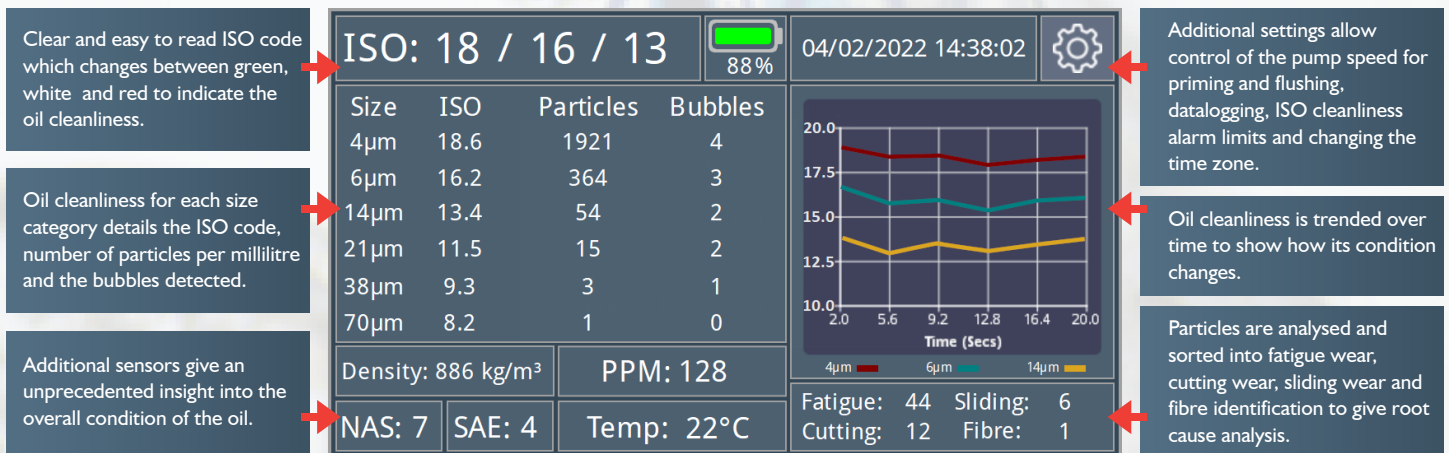
Displays live density of fluid samples.



Particulate analysis.

The Atten2 digital imaging particle counter gives advanced size and shape recognition for any sample. Counting particulate in fuel and virtually any oil up to 320cSt, the Atten2 device also eliminates air bubbles, making it ideal for heavy lube and gear oil applications in cold temperatures. Reporting 4, 6, 14, 21, 38 & 70 micron counts as well as categorising any particle greater than 20 microns into:

• Fatigue Wear • Sliding Wear • Cutting Wear • Fibres



Particle Pal Plus Advanced Fuel Analysis - TECHNICAL INFORMATION

Fluid Compatibility	Synthetic oils, organic oils, mineral oils & diesel fuel (320 cSt viscosity limit)
Display Information	Particulate: ISO 4406, SAE AS4059 & NAS 1638, bubble elimination and particle wear analysis. Water sensing: Water is displayed as parts per million (PPM). Density: Range: 0.6kg/m ³ - 1.3kg/m ³ Resolution: 0.001kg/m ³ Accuracy: +/- 2%
Modes of Operation	High pressure live system sampling (up to 350 bar) - via a high pressure adaptor. Bottle sampling and tank sampling.
Data	All data stored locally with an option to export to CSV or PDF.