



Filtertechnik

**FIRST  AID
FOR FUELS™**

Solutions for Fuel Cleanliness

Diagnosis & Prevention

Treatment

Cure

Health



GeoSeal® High-Flow Coalescing Filter

Our high-flow GHCF coalescing filter removes water (95% single pass water removal efficiency) and is fully compatible with both diesel and most biodiesel.

A maximum flow rate of 95 L/min and a maximum pressure of 10.3 bar, with a 5µm absolute rated coalescing filter enables the GHCF filter used in many applications such as mobile vehicles, industrial, railroad, mining, fuel storage, and other fuel applications.

Enquiry Code: GHCF



Fuel Filtration Cart

Filtertechnik's Fuel Filtration cart is designed for dispensing, transferring and polishing applications. The rugged "Sack Truck" style frame makes it highly manoeuvrable for when site access is challenging. A self-priming progressive cavity pump enables fuel to be lifted from a depth of up to 5m.

The Schroeder Industries GHPF filter provides absolute-rated filtration in a range of grades down to 1µm, whilst the GHCF coalescing filter uses the latest separation technology to ensure a single pass water removal efficiency of >95% on both diesel and bio-diesel.

Enquiry Code: FFC

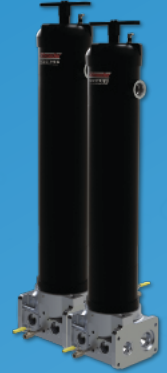


Bulk Diesel Fuel Skid

The Filtertechnik / Schroeder bulk diesel fuel skid is a complete filtration system designed with integrated particulate pre-filtration, that has the option of 3 or 1µm absolute rated elements, followed by a coalescing filter for single-pass filtration.

A high flow rate capacity of 265 l/min makes this system suitable for transfer from tank to storage or storage to vehicle applications.

Enquiry Code: BDS



Bulk Diesel Multi Skid

Filtertechnik/ Schroeders bulk diesel multi skid is designed as a high capacity filtration system with integrated particulate pre-filtration, available with 3 or 1µm absolute rated elements, followed by a coalescing stage for high water removal rates.

The system has an extensive flow range of 795-1060 l/min.

The staged filtration is designed to protect tier 3 & 4 engine components against failures caused by water and particulate contamination in a single pass.

Enquiry Code: BDS4



Bestfit replacement elements

Filtertechnik, in partnership with Schroder Industries, can now offer a range of Bestfit replacement elements based on the Parker FBO series, providing alternatives for both the particle and coalescing elements.

The Bestfit particle design brings Schroeder's "Z" media to fuel filtration with improved particle removal efficiency and capacity. Along with improved performance comes a design that incorporates components that prevent degradation and eliminate the potential for corrosion. To the right are the alternative options available from Filtertechnik.



Parker Racor Part	Housing	Micron	Function	Schroeder model code	
FBO 60331	FBO - 10	5	Particulate	SBFD-FBO-10Z5V	
FBO 60334			Water Absorbing	Consider SBFC-FBO-10Z5V	
FBO 60328			Water Coalescing	SBFC-FBO-10Z5V	
FBO 60354		10	10	Particulate	SBFD-FBO-10Z5V
FBO 60355				Water Absorbing	Consider SBFC-FBO-10Z5V
FBO 60353				Water Coalescing	Consider SBFC-FBO-10Z5V
FBO 60332		25	25	Particulate	SBFD-FBO-10Z25V
FBO 60335				Water Absorbing	Consider SBFC-FBO-10Z5V
FBO 60329				Water Coalescing	Consider SBFC-FBO-10Z5V
FBO 60340	FBO - 14	5	Particulate	SBFD-FBO-14Z5V	
FBO 60343			Water Absorbing	Consider SBFC-FBO-14Z5V	
FBO 60337			Water Coalescing	SBFC-FBO-14Z5V	
FBO 60357		10	10	Particulate	SBFD-FBO-14Z10V
FBO 60358				Water Absorbing	Consider SBFC-FBO-14Z5V
FBO 60356				Water Coalescing	Consider SBFC-FBO-14Z5V
FBO 60341		25	25	Particulate	SBFD-FBO-14Z25V
FBO 60344				Water Absorbing	Consider SBFC-FBO-14Z5V
FBO 60338				Water Coalescing	Consider SBFC-FBO-14Z5V

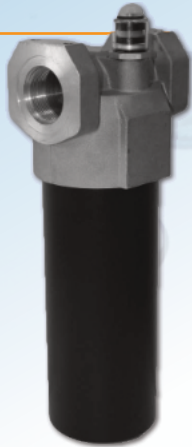
*All coalescing elements have anti-static media as standard.

Filter Housings

Filtertechnik's range of medium pressure filter housings come in either 6", 9", 12", or 14" element lengths. These filters can be used before the GHCF coalescing filter (to protect the coalescing element) or can be used on their own when only particulate removal is required.

Using Schroeder filtration technology, our range of filter housings comes with a wide variety of filter media options to cater for heavily contaminated fuels through to polishing down to 1µm absolute.

Enquiry Code: FTB-B



Filtertechnik bag filter housings

Filtertechnik bag filter housings are designed for industrial filtration applications with flow rates of up to 416 l/min, for the standard housings, and 2666 l/min for one of our 4 cell housings. They are suitable for use with the industry standard Filtertechnik Ftech 7" filter bags that are widely used in today's process, water, oil and fuel industries.

The housing will accept the full range of bags ranging from 1 to 1000 microns, along with a new range of absolute rated cartridge filters for more critical applications that will achieve cleanliness levels of ISO4406 14/12/9 - 13/11/8. To increase throughput, two or more filter housings can be connected in parallel to form duplex arrangements. This allows for both filters to be run simultaneously or for one filter to be isolated and serviced whilst the other is operational.

Due to the low-cost nature of the consumables, Filtertechnik bag filter housings are often used as sacrificial filters to offer excellent protection of more expensive filters elsewhere in the system. With operating pressures up to 10 bar, Filtertechnik's bag filter housing offer excellent versatility.

Enquiry Code: LPCPF



Fuel Conditioning monitoring

Our compact Particle Pal Plus product offers an immediate insight into a fuel's cleanliness level.

The user-friendly device is specifically designed for field engineers with a simple start-stop operation to reduce setup time.

The product range is modular, each unit can be ordered with additional sensors, including water, viscosity and density allowing a deeper insight into the fuel's status. Why waste time filtering systems longer than necessary when you can monitor and record the cleanliness level in under 5 minutes

Enquiry Code: FS9V4



Filtration Clean-up Rental Fleet

Filtertechnik have a comprehensive rental fleet of portable filtration units for diesel and bio-diesel fuels, as well as oils and process fluids.

Units with flow capabilities from 8 to 250L/min are available immediately from stock and can be hired for the time periods according to your requirement.

The rugged, compact sack-truck style of many of our units allows for easy manoeuvrability in challenging environments as well as rapid deployment.

Suction and delivery hoses are included with most units, along with many filter element options according to your needs.



Bespoke Filtration Service

Filtertechnik offer a bespoke filtration service to meet the most challenging applications. We know that not every application will be suited to an off the shelf standard design, so we offer a comprehensive "concept to completion" design and build service. Using the latest SolidWorks CAD modelling our dedicated team of Engineers will develop a solution to meet your requirements.

Please contact us for further information or to discuss your application in more detail.





Filtertechnik

Filtertechnik Ltd
1 Central Park
Lenton Lane
Nottingham
NG7 2NR

+44 (0) 115 9003 600
sales@filtertechnik.co.uk

filtertechnik.co.uk

