

55 SERIES

SINGLE STACK FILTER HOUSING

The **55 SERIES** single cartridge housing has been developed specifically for environments where access to the filter chamber is restricted. This unit accepts Double Open End cartridges, and uses a central bolt with Tee nut for the closure. Ideal for use in areas of limited access and where the spent fluid and element need to be retained within the bowl. Suitable only for use in the liquids processing industry..

Product features

- Through bolt assembly ensures centralisation of the cartridge for a reliable knife edge seal, suitable for cartridges ranging from 9.75" through to 30"
- Lightweight, high specification investment cast head
- Available in 316L stainless steel
- Wide range of connection size and types, cartridge lengths and materials of construction
- PED Compliant to Sound Engineering Practice
- Full traceability on all parts, material certification packs available.
- Rated at 10 bar



55 series features and benefits

- Investment Cast head (avoids the porosity & inclusion problems associated with lower quality sand castings).
- Integral vent and drain sockets to aid efficient filter changeout complete with PTFE washer.
- Every housing is etched with a batch number for full traceability
- Full housing customisation service available

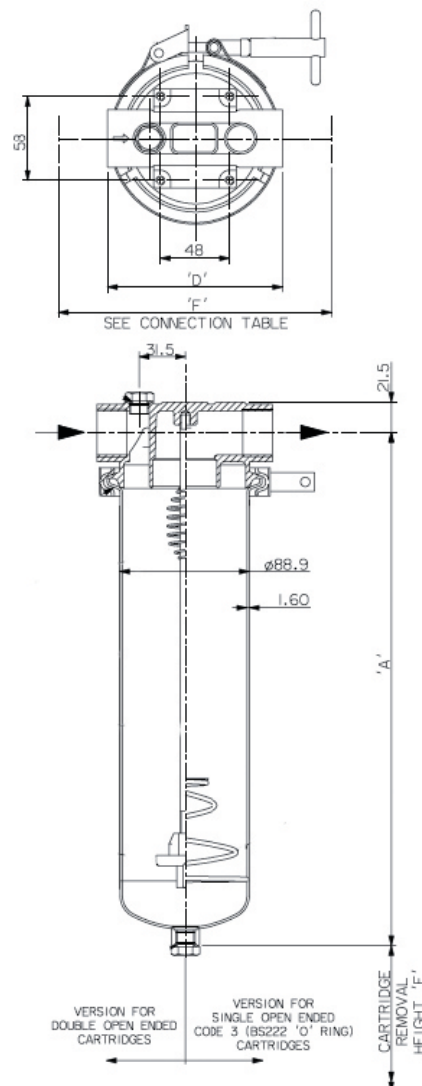
TECHNICAL DATA

Maximum Operating Conditions	
Maximum Pressure	Liquid: 10 Bar g F/V Gas: N/A
Maximum Temperature	110°C
Materials of Construction	
Body and Closure	316L St. Steel
Seal	EPDM
Finish	
Vessel	Bead blast all over
Connections	
Inlet/Outlet	1" BSPF
Vent	1/4" BSPF with plug
Drain	1/4" BSPF with plug

Model	Dimensions					Volume (Litres)	Dry Weight
	A	B	C	D	E		
10"	341	-	-	120	300	2.2	2.2
20"	595	-	-	120	554	3.7	3.7
30"	849	-	-	120	808	5.2	5.2

PED Status: Compliant with 97/23/EC

- Fluid Groups: Liquids Group I + 2
- Marking: Sound Engineering Practice
- Exceptions: Group I Liquids - Oxidising or Explosive
- ATEX: Compliant 94/9/EC, level CE Ex II 2 GD c X



Ordering Guide

FT55

