

Combinations

MEDIUM CONVOLUTED DIAPHRAGM

Gauge



Switch



Gauge+switch
(with a DIN plug)



Gauge



Gauge+switch
(with a DIN plug)



Gauge
(Wall Mounting)



400 DGC

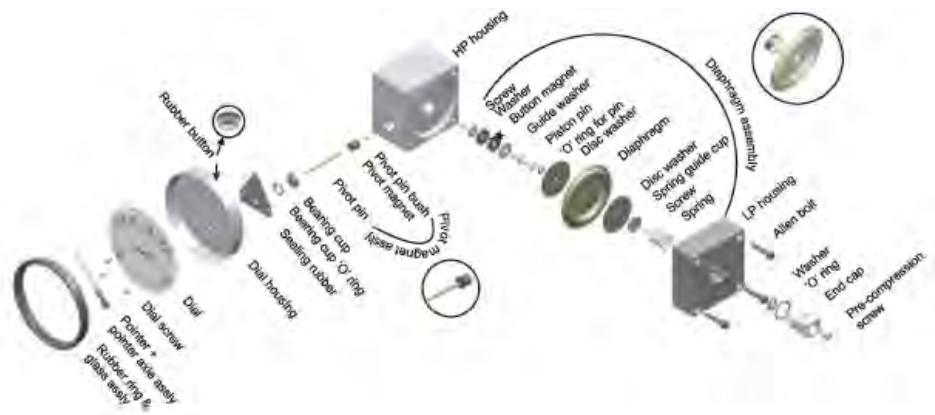
- Accuracy
- Migration
- Range
- First marking on the scale
- Sensing element
- Wetted parts
- Case material
- Dial size in inch/mm
- Mounting
- Maximum working pressure
- Maximum process temperature
- Body material
- Seals
- Window
- Connection
- Porting
- Over range protection
- Protection for gauge & switch

- Liquid filling
- Red follower pointer (except 6")
- Customer logo
- Dual scale
- Colour band

ΔP Range : 0 to 25 upto 600 mm H₂O
0 to 1 upto 25 inch H₂O

- ±2% of the FSD (Ascending)
- No migration : Zero leakage from high to low port
- 0-25 to 0-600 mm H₂O or similar ranges in other units
- 15% of the FSD
- Diaphragm
- Diaphragm, body material, SS 302 spring & ceramic magnet
- Stainless steel (SS 304)
- 3.5", 4", 4.5", 6"/80, 100, 115, 150 mm
- Direct, front flange, 2" pipe & surface mounting
- 35 bar / 500 psi.
- 80°C / 175° F
- Aluminum & SS 316
- Buna-N, Viton, EPDM diaphragm & 'O' rings
- Float glass (Std.), toughened glass, acrylic & safety glass
- 1/4" NPT (F) Std. Optional 1/4" BSP (F) with adaptor
- In-line, rear, bottom, bottom & vent, in-line & vent, in-line & bottom.
- Up to the max. working pressure from high side
- IP 65 / NEMA-4

- 1 or 2 SPSTs with a DIN plug
- 1 SPDT with a DIN plug



Standard Gauge Model Number System



XX



XXXX



XX

XX

Gauge Model	Port Location	Body Material	Dial Face Size	Range	Options
PG: Piston Gauge DG: Diaphragm	1. Inline 2. Rear 3. Bottom	A. Aluminum B. Brass S. Stainless	25: 2.5" 45: 4.5" 60: 6.0"	#P: PSID #B: Bar #KPA: kPA #IW: In. H20 #mW: mm H20	Blank: None CB: Colour Band CL: Custom Logo CR: Calibration Report ES: EPDM Seals FP: Follower Pointer LF: Liquid Filling MB: Mounting Bracket OX: Oxygen Cleaning VS: Viton Seals Electrical Switches S1: 1 SPST w/DIN Plug S2: 1 SPST w/terminal strip S3: 2 SPST w/DIN Plug S4: 2 SPST w/terminal strip S5: 1 SPDT w/DIN Plug S6: 2 SPDT w/terminal strip S7: 2 SPDT w/DIN Plug S8: 2 SPDT w/terminal strip

Examples		
<p>Application 1</p> <p>Design Requirements</p> <ul style="list-style-type: none"> • Piston Gauge • Inline Connections • Aluminum body with standard Buna seals • 2.5" dial case • 10 PSID range • No Options <p>Model number</p> <ul style="list-style-type: none"> • PG-1A25-10P 	<p>Application 2</p> <p>Design Requirements</p> <ul style="list-style-type: none"> • Piston Gauge • Bottom Connections • Aluminum body with standard Buna seals • 2.5" dial case • 2 Bar range • Liquid Fill <p>Model number</p> <ul style="list-style-type: none"> • PG-3A25-2B-LF 	<p>Application 3</p> <p>Design Requirements</p> <ul style="list-style-type: none"> • Piston Gauge • Inline Connections • Stainless body with standard Buna seals • 2.5" dial case • 10 PSID • Colour Band • 1 SPST swith with terminal strip <p>Model number</p> <ul style="list-style-type: none"> • PG-1S25-2B-CBS2