



Filtertechnik

BYPASS FILTRATION

THE HIPPO FILTER SYSTEM



HIPPO FILTERS

LOVE DIRT & WATER



BEFORE

AFTER

Water Based Fluids | Process Fluids | Heating Oils | Turbine Oils | Bio-ethanol | Kerosene | Diesel | Oils



WHY DO YOU NEED A HIPPO FILTER?

WHY SHOULD YOU USE A HIPPO FILTER?

FACT: Effective filtration will extend the life of your machinery and maintain oil cleanliness.



SIMPLE INSTALLATION:

- ✓ The Hippo filter can be fitted quickly and simply by approved mechanics.
- ✓ Water and solid particulate removal.
- ✓ The Hippo Filters high performance cartridges allow for the removal of ultra-fine particles and debris, thereby immediately reducing the risk of contamination-induced damage to parts and machinery.

The Hippo series can be used to enhance the life and performance of other, more expensive system filters. The wear and tear of hoses and fittings is also greatly reduced due to the effective removal of harmful particulate.

With today's machinery operating under increasingly fine tolerances, the removal of particulate and moisture down to acceptable levels is paramount.

As the Hippo system effectively removes water from the oil/fuel, the risk of fluid degradation is significantly reduced along with inevitable associated down-stream problems.



HOW OFTEN DO YOU CHANGE YOUR OIL?

It is a well known fact that oil and fuel cleanliness is critical. It is not uncommon for large machines to dispose of oil on a monthly basis. By fitting a Hippo filter, you will extend the lifetime of your oil.



EXTEND OIL LIFE UP TO 10 TIMES:

By fitting a Hippo filter, you can ensure your oil (lubricating, hydraulic or gear oil) remains clean and dry. This will ensure that the oil remains in excellent condition for up to 10 times longer.



FEATURES AND BENEFITS

- ✓ Eliminates water from oil using cellulose elements
- ✓ Eliminates oil from water using polypropylene elements
- ✓ Does not remove additive packages
- ✓ Extends oil drain intervals
- ✓ Increases service intervals
- ✓ Provides continuous protection
- ✓ Environmentally friendly
- ✓ Reduces machine downtime
- ✓ Removes dirt and solid contaminants down to NAS 5/ISO 14/9 or better

CARTRIDGES AVAILABLE



SDFC (W2) Disc



SDFC (W2P)



MM4627-AI

Compatibility	Element Type	Achievable Cleanliness Code	Retention		Height mm	Diameter mm	Weight gm	Flow rate Recommendation
			Solids grm	Water ml				
Oils & fuels	SDFC (W2) Disc	ISO 4406 14/9 NAS class 5	Up to 2200	750	90	180	600g ±5%	1-10 l/min per cartridge
Water glycols	SDFC (W2P)	30 micron nominal	Up to 2200	n/a	90	180	600g ±5%	1-10 l/min per cartridge
Oils & fuels	MM4627AI	10 micron absolute NAS 7 19/17/14-18/16/13	Up to 1200	n/a	90	180	800g ±5%	22 l/min per cartridge

Operating Temperature: The cartridge will operate within the operating specification of engine, hydraulic and gearbox oils -10°C to +120°C.



THE RESULTS SPEAK FOR THEMSELVES:

The fluid samples and patch slides below demonstrate the remarkable filtration capability of the Hippo series of filtration systems.

WATER REMOVAL

BEFORE



3489 ppm

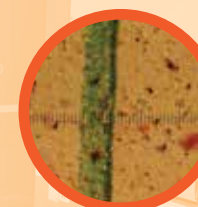
AFTER



85 ppm

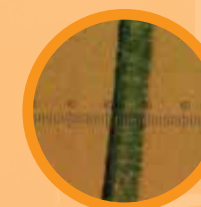
SOLID PARTICULATE REMOVAL

BEFORE



ISO 20/19/17

AFTER

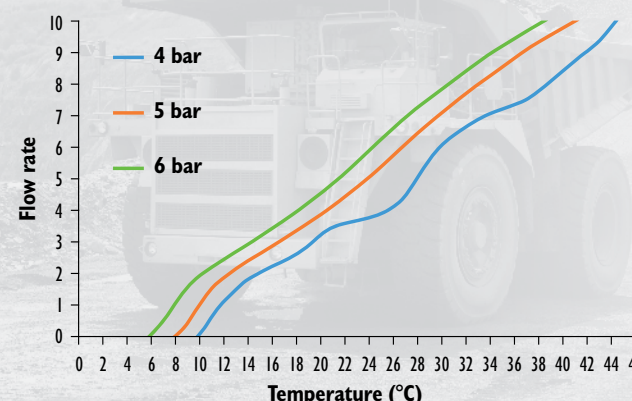


ISO 13/11/8

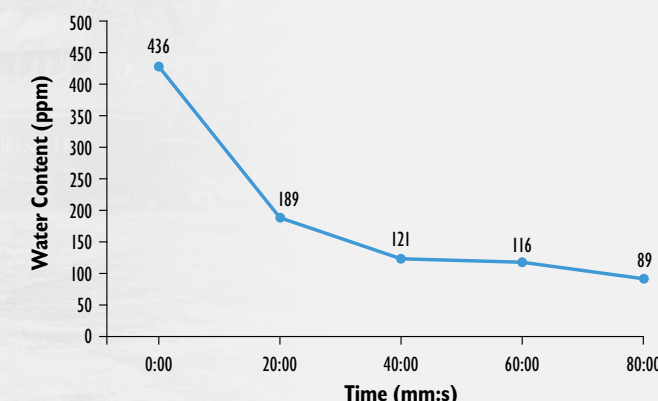
PRODUCT TESTING

Our hippo filters are distributed worldwide and can fit onto a wide range of construction machinery, filtering oil as the machine is running.

ISO 100 HYDRAULIC OIL



HIPPO WATER REMOVAL CHART



HIPPO PRODUCT OVERVIEW

HIPPO FILTER HOUSING

- Water and particulate removal (depending on element)
- 1-10 L/M (depending on fluid viscosity) 10 bar maximum pressure
- 120°C maximum temperature
- 3/8" BSP (F) or 1/2" connections BSP (F)
- High pressure option available to 210 bar



ORDER CODE:
FTP180

NEW

HIPPO FILTER HOUSING WITH HIGH PRESSURE REDUCING VALVE

- Water and particulate removal (depending on element)
- 1-10 L/M (depending on fluid viscosity)
- New 210 bar maximum pressure
- Flow compensation valve
- 120°C maximum temperature
- 1/2" BSP connections



ORDER CODE:
FTP180-HP

HIPPO FILTERS MOUNTED ONTO NYLON MANIFOLD BLOCK

- 2 x Hippo mounted on a manifold block
- Water and particulate removal (depending on element)
- 1-10 L/M (depending on fluid viscosity)
- 10 bar maximum pressure
- 120°C maximum temperature
- 3/4" BSP (M) connections



ORDER CODE:
FTP180-2

HIPPO – BYPASS FILTRATION SYSTEM

- Off-line Hippo System
- Up to 20 L/M at 4 bar (depending on fluid viscosity)
- 10 bar maximum pressure*
- Gauge to show when filters blocked
- Water and particulate removal (depending on element)
- 120°C maximum temperature
- High pressure option available to 350 bar pressure compensation valve

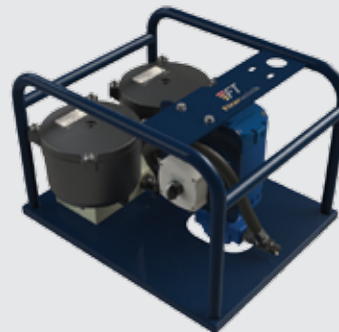


ORDER CODE:
FTP-180-6-HP

* Various valve arrangements can be incorporated into the inlet to allow for high pressures

OIL OR FUEL POLISHING SYSTEM

- Static twin filter unit
- 10 L/M maximum flow rate (depending on fluid viscosity)
- Water and particulate removal
- Removes up to 2kg of particulate and 0.7 litres of water per element
- Pressure gauge filter blockage indicator
- 240/110v/415v options
- 3 metre suction and return line hoses
- 1 metre lances on hoses
- Magnet option



ORDER CODE:
BD5000

CALL US **FIRST** AND REQUEST MORE INFORMATION
ABOUT OUR ENTIRE RANGE OF ADVANCED SOLUTIONS
FREEPHONE **0800 0087 456** OR EMAIL sales@filtertechnik.co.uk