



Filtertechnik

66 SERIES

HIGH FLOW LIQUID AND GAS HOUSING

The **66 SERIES** housing range is specifically designed for use with the large bore SUPAPLEAT HFC cartridge to provide a filtration system that offers maximum efficiency, high flow rates and long life.

This high quality electropolished 316L stainless steel housing is easy to use and is suited to many filtration processes across a range of industries. Available in a selection of sizes and with a choice of connections and closure types the optimum housing can be provided for each application.

The 66 SERIES housing is available to be used with 20", 40" or 60" cartridges. It can be installed in either the vertical or horizontal position and can be supplied with fixed or adjustable legs. This ensures that the housing can normally be used even where space or changes to inlet and outlet pipework are limited.

Product Features:

- Designed for high flow systems
- Multi cartridge units available up to 30 round
- Easy and quick cartridge change-out
- Electropolished inside and out
- Available for 20", 40" or 60" filters
- Each housing is hydrostatically pressure tested
- Available with 3" or 4" connections and in a range of types
- Can be supplied with adjustable or fixed legs where required
- Rated at 10 bar liquid, 3 bar gas
- PED and ATEX Compliant



66 Series features and benefits

- Designed for use with the SUPAPLEAT HFC cartridge for maximum flow rates
- Utilises large bore cartridge allowing quick and easy filter change out
- Can be used vertically or horizontally with or without legs
- Flexible design allows use of either V band or Rathmann clamp closure
- Full housing customisation service available

Technical data

Maximum Operating Conditions

- Maximum Pressure: Liquid: 10 Bar g
Gas: 3 Bar g
- Maximum Temperature: 110°C

Materials of Construction

- Body and Closure: 316L St. Steel
- Closure: Vee Clamp - 304 St. Steel
Screw Clamps - Zinc plated carbon steel
(Optional Stainless Steel)
- Vessel Finish: Electropolished

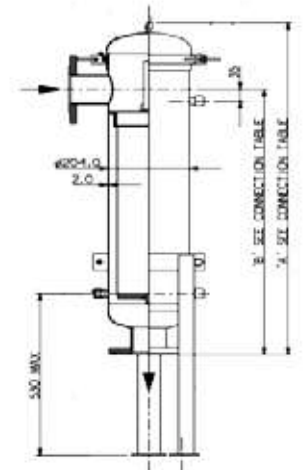
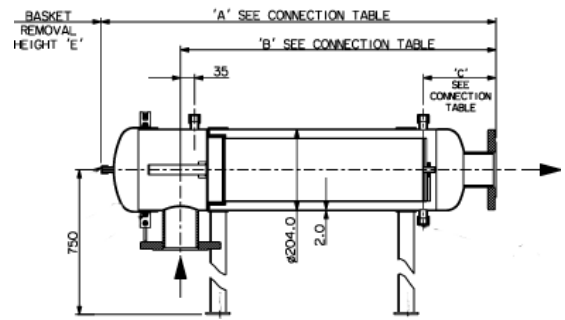
Connections

- Inlet/Outlet: 3" Flanged
- Vent: Horizontal: ½" BSPM
Vertical: ¼" BSP
- Drain: ½" BSPM

Model	Flow rate (l/min)					Volume (Litres)	Dry Weight (Kg)
	A	B	C	D	E		
66012CAC30C1EE	983	787	181	200	500	27.4	34.4
66014CAC30C1EE	1498	1302	181	200	1000	43.5	41.9
66014CAI30C1EE	1498	1302	181	200	1000	43.5	41.9
66016CAI30C1EE	2006	1810	181	200	1000	59.1	49.3

PED Status: Compliant with 97/23/EC

- Fluid Groups: Liquids Group 1 + 2
Gas Group 2
- Marking: CE
- Exceptions: Group 1 liquids - Oxidising or Explosive
- ATEX: Compliant 94/9/EC, level CE Ex II 2 GD c X



Ordering guide

